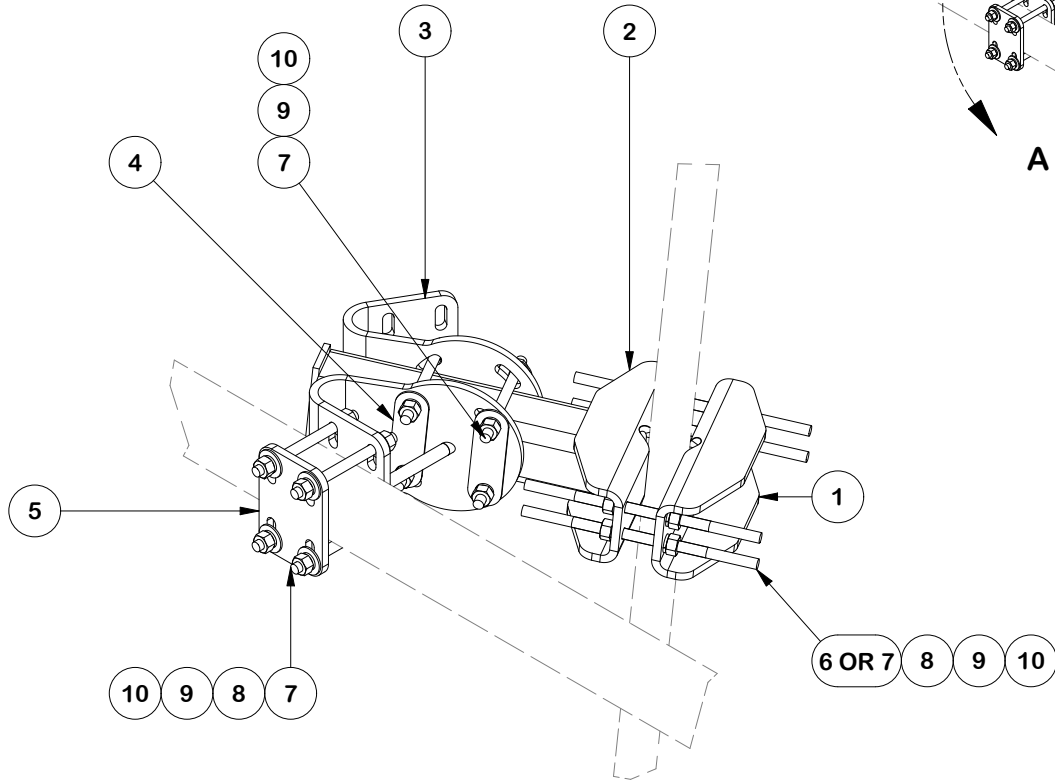
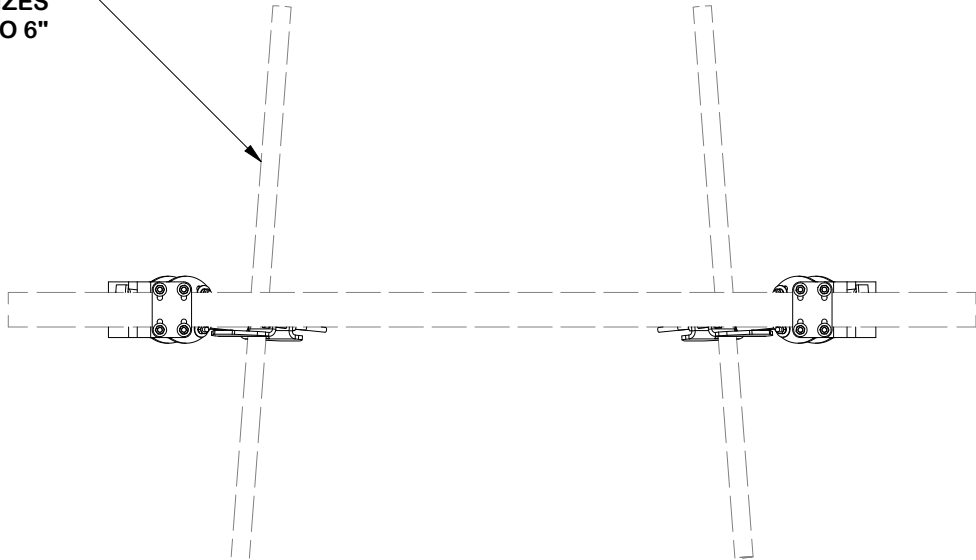


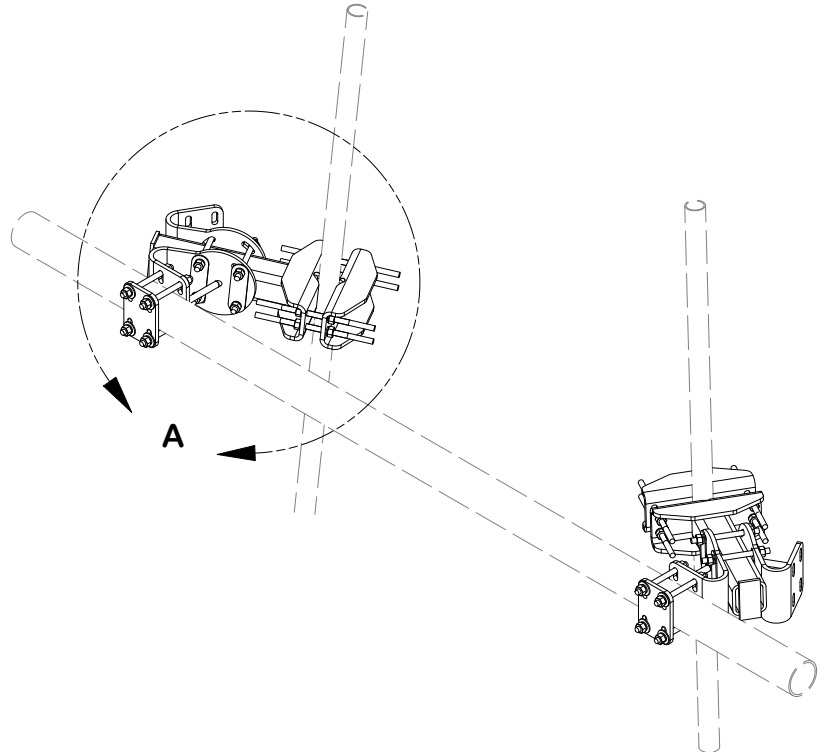
PARTS LIST						
ITEM	QTY	PART NO.	PART DESCRIPTION	LENGTH	UNIT WT.	NET WT.
1	2	X-FACE-BP	BENT PLATE FOR X-HDCAMTBW	13.000 in	18.08	36.15
2	2	X-FACE-TW	TUBE WELDMENT		48.02	96.04
3	4	X-FACE-TA	TAPER ADJUSTMENT WELDMENT		20.84	83.35
4	8	X-FACE-SB	SPACER BRACKET	6.750 in	0.45	3.58
5	2	X-FACE-CP	CONNECTION PLATE	12.000 in	4.53	9.06
6	8	G58R-14	5/8" x 14" THREADED ROD (HDG.)		1.22	9.76
7	24	G58R-8	5/8" x 8" THREADED ROD (HDG.)		0.70	16.73
8	16	G58FW	5/8" HDG USS FLATWASHER	.122	0.07	1.13
9	48	G58LW	5/8" HDG LOCKWASHER		0.03	1.25
10	48	G58NUT	5/8" HDG HEAVY 2H HEX NUT		0.13	6.23
TOTAL WT. #						263.27

ROUND LEG SIZES
1-1/2' TO 9-1/2' DIA.

ANGLE LEG SIZES
3" TO 6"



DETAIL A



FINISH:
HOT DIP GALVANIZED.

TOLERANCE NOTES

TOLERANCES ON DIMENSIONS, UNLESS OTHERWISE NOTED ARE:
SAWED, SHEARED AND GAS CUT EDGES ($\pm 0.030''$)
DRILLED AND GAS CUT HOLES ($\pm 0.030''$) - NO CONING OF HOLES
LASER CUT EDGES AND HOLES ($\pm 0.010''$) - NO CONING OF HOLES
BENDS AND ANGLES ARE $\pm 1/2$ DEGREE
ALL OTHER MACHINING ($\pm 0.030''$)
ALL OTHER ASSEMBLY ($\pm 0.060''$)

PROPRIETARY NOTE:
THE DATA AND TECHNIQUES CONTAINED IN THIS DRAWING ARE PROPRIETARY INFORMATION OF VALMONT INDUSTRIES AND CONSIDERED A TRADE SECRET. ANY USE OR DISCLOSURE WITHOUT THE CONSENT OF VALMONT INDUSTRIES IS STRICTLY PROHIBITED.

DESCRIPTION
SINGLE-LEVEL SINGLE-SECTOR
FACE MOUNT KIT
NO PIPE

CPD NO. SP1		DRAWN BY CMFL 10/25/2021	ENG. APPROVAL
CLASS 87	SUB 02	DRAWING USAGE SHOP	CHECKED BY



Locations:
New York, NY
Atlanta, GA
Los Angeles, CA
Plymouth, IN
Salem, OR
Dallas, TX
Tampa, FL

Engineering
Support Team:
1-888-753-7446

PART NO. FACE-ASY1-NPS
DWG. NO. FACE-ASY1-NPS